



MAKE IT GREEN  
GARDEN CENTRE

*It's only natural*



### **Corsican Mint\***

*Mentha requienii*

Height: 1 inch

Spread: 12 inches

Sunlight: ☉ ☿

Hardiness Zone: (annual)

#### **Description:**

The smallest of Mints, this variety forms a flat carpet of tiny green leaves with intense fragrance; plant between flagstones as groundcover; will often self seed for years; a great base plant for containers

#### **Ornamental Features**

Corsican Mint features tiny spikes of lilac purple tubular flowers rising above the foliage from mid to late summer. Its attractive tiny fragrant round leaves remain green in colour throughout the season.

#### **Landscape Attributes**

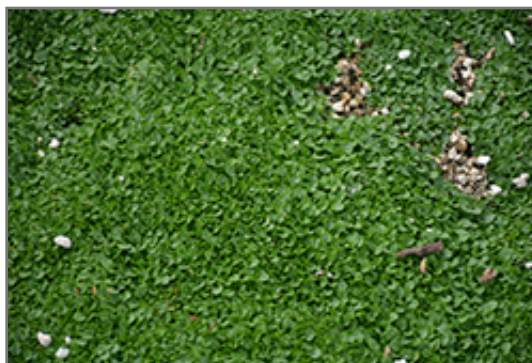
Corsican Mint is an herbaceous annual with a ground-hugging habit of growth. It brings an extremely fine and delicate texture to the garden composition and should be used to full effect.

This is a relatively low maintenance plant, and should be cut back in late fall in preparation for winter. It is a good choice for attracting bees and butterflies to your yard, but is not particularly attractive to deer who tend to leave it alone in favor of tastier treats. Gardeners should be aware of the following characteristic(s) that may warrant special consideration;

- Invasive

Corsican Mint is recommended for the following landscape applications;

- Mass Planting
- Rock/Alpine Gardens
- Border Edging
- General Garden Use
- Container Planting



*Corsican Mint foliage*  
*Photo courtesy of NetPS Plant Finder*



---

MAKE IT GREEN  
GARDEN CENTRE

---

*It's only natural*

### **Planting & Growing**

Corsican Mint will grow to be only 1 inch tall at maturity, with a spread of 12 inches. Its foliage tends to remain low and dense right to the ground. Although it's not a true annual, this fast-growing plant can be expected to behave as an annual in our climate if left outdoors over the winter, usually needing replacement the following year. As such, gardeners should take into consideration that it will perform differently than it would in its native habitat.

This plant does best in full sun to partial shade. It prefers to grow in average to moist conditions, and shouldn't be allowed to dry out. It is not particular as to soil type or pH. It is highly tolerant of urban pollution and will even thrive in inner city environments. This species is not originally from North America. It can be propagated by division.

Corsican Mint is a fine choice for the garden, but it is also a good selection for planting in outdoor pots and containers. Because of its spreading habit of growth, it is ideally suited for use as a 'spiller' in the 'spiller-thriller-filler' container combination; plant it near the edges where it can spill gracefully over the pot. Note that when growing plants in outdoor containers and baskets, they may require more frequent waterings than they would in the yard or garden.

*\* This is a 'special order' plant - contact store for details*